



SMARTER PARKING for
SMART COMMUNITIES.™

2+ DECADES
OF INNOVATION



SMARTER PARKING for
SMART COMMUNITIES™



300,000+
CONNECTED
PARKING DEVICES SOLD



**MILLIONS
INVESTED**
ANNUALLY IN

R&D



BACK-END
PARKING
INTELLIGENCE

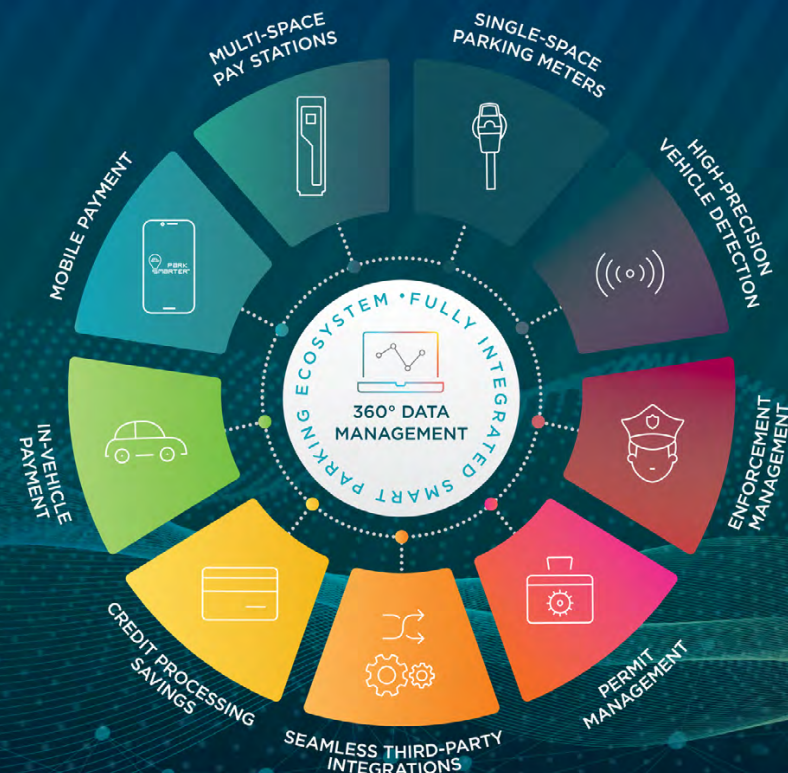


**ENHANCED
PAYMENT
OPTIONS**

**FUTURE
PROOFING**



DESIGNED, ENGINEERED,
MANUFACTURED & SUPPORTED
IN THE U.S.A.



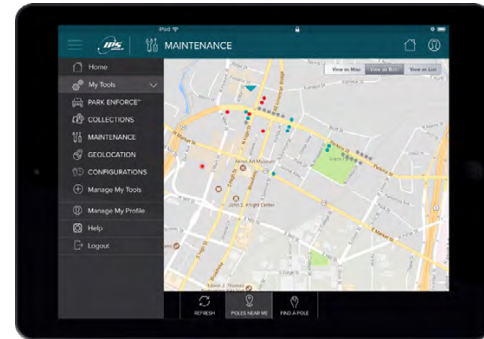
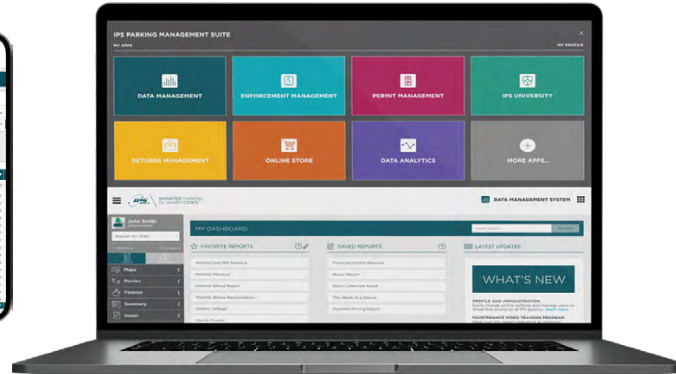
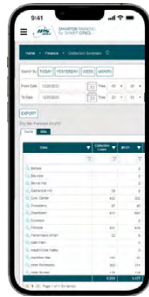
Fully Integrated Smart Parking Ecosystem

IPS develops Smart Parking technology that drives greater efficiency today and evolves to ensure continual success. The IPS Fully Integrated Smart Parking Ecosystem transforms how Smart Communities of any size manage parking with one trusted, proven solution.

Data Management System

At the heart of your parking operations, the DMS unifies all your data into a single back-end system. Comprehensive reporting, intuitive dashboards, and advanced analytics provide the most accurate measurement of program effectiveness. To empower your team, the DMS also features Tech Tools, a fully integrated maintenance, resource and inventory management solution.

IPS unlocks 360° Parking Management Solutions by combining perfectly seamless, real-time IPS application integration, and powerful business intelligence.



DATA MANAGEMENT SYSTEM

DMS

KEY BENEFITS

- Robust Reporting and Visual Analytics
- Maintenance Alerts and Tracking
- Custom Reports, Dashboards and Configurations
- Dynamic / Demand-Based Rate Structures
- Performance, Occupancy, Citation and Revenue Tracking
- Access to Technical Documentation
- Optimized Route Planning
- SSO to All IPS Modules
- All Export Formats Supported



For more information on the IPS Fully Integrated Smart Parking Ecosystem, please contact us.

Schedule a Q&A: **877.630.6638** | [ipsgroup.com](https://www.ipsgroup.com)

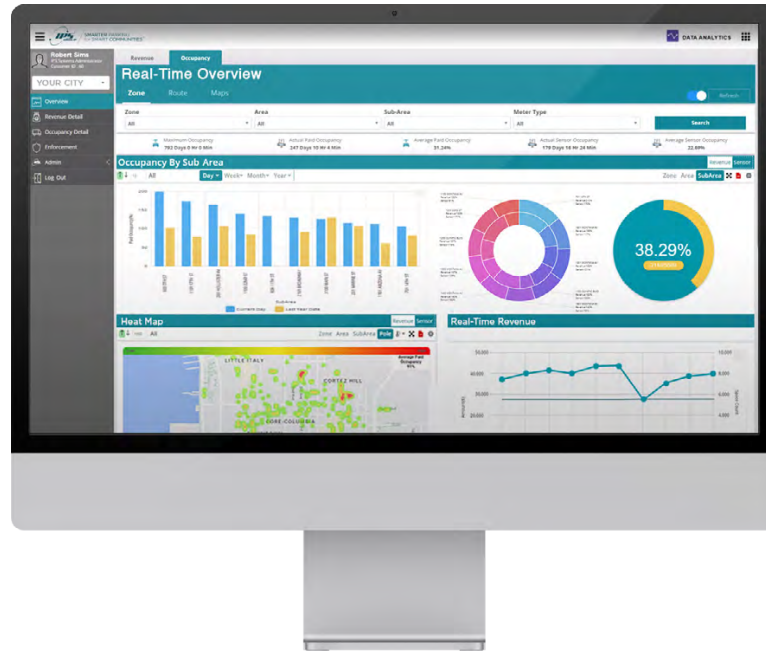
© 2023 IPS Group, Inc. All rights reserved.



Parking Management System Aggregator

Whether you work exclusively with IPS or need to aggregate multiple third-party parking platforms, IPS can completely unify your operations with the Parking Management System Aggregator. Centralize your parking data to uncover a 360° view of performance and revenue and make confident data-supported decisions.

IPS provides a holistic view across all technology partners so Managers can focus on what's most time sensitive while monitoring the pulse of the entire operation.



PARKING MANAGEMENT

SYSTEM AGGREGATOR

KEY BENEFITS

- Automated real-time reporting, advanced analytics, KPIs and data visualization tools.
- Customizable dashboards with performance insights around occupancy, revenue, citations, and more.
- Predictive analytics forecast and influence policy decisions around demand-based pricing, inventory, and efficiencies for enforcement, maintenance, and collections.
- Holistic view of data across technology partners promotes end-to-end performance measurement of on-street and off-street programs.



For more information on the IPS Fully Integrated Smart Parking Ecosystem, please contact us.

Schedule a Q&A: **877.630.6638** | ipsgroup.com

© 2023 IPS Group, Inc. All rights reserved.





Single-Space Smart Parking Meter

Setting the industry standard for Single-Space Smart Parking Meters, the M5 provides a simple, customer-friendly experience and is more cost-effective and reliable than alternatives. The meter retrofits into current housings for fast installation and uses energy-efficient solar power. The M5 accepts many forms of payment including card, coin, and optional contactless via Apple Pay® and Google Pay™, mobile payment integration, smart card and tokens. Configurations and real-time data are accessed via the fully integrated, web-based Data Management System.



- 1 Graphic Display
- 2 Keypad
- 3 Card Slot
- 4 Coin Slot
- 5 Secure Vault



SINGLE-SPACE

PARKING METERS

KEY BENEFITS

- Supports Most Payment Options
- Customer-Friendly
- Fast 4G Wireless Communications
- Integration-Ready
- Durable Design
- Unparalleled Power Efficiency
- Retrofits Almost All Housings
- Secure, Vandal-Resistant
- Weather-Proof
- Easy Maintenance



AVAILABLE SOON:



The patented M7™ offers all the features of the M5™ along with a high-resolution color display, tri-LED visual indicator, and extreme heat resistance.



For more information on the IPS Fully Integrated Smart Parking Ecosystem, please contact us.

Schedule a Q&A: **877.630.6638** | ipsgroup.com

© 2023 IPS Group, Inc. All rights reserved.



Smart Sensors

Boost decision-making power with IPS Smart Sensors – the perfect pair for IPS Single-Space Parking Meters. High-precision detection ensures maximum accuracy of vacancy and occupancy data so you can confidently form policies that increase parking availability and revenue.

Compared to the competition, IPS Smart Sensors offer the highest accuracy, longer battery life, greater auditing functions, and easiest installation and maintenance.

- 1 Dome Mount
- 2 Pole Mount



VEHICLE DETECTION

SMART SENSORS

KEY BENEFITS

- Generate More Revenue
- Discover Trends
- Promote Space Turnover with Reset Function
- Make Stronger, Data-Supported Decisions
- Maximize Data Accuracy
- Offer Courtesy Time
- Improve Audit Function
- Install in Minutes
- Integrate Seamlessly
- Maintain with Ease



WHY IMPLEMENT IPS SMART SENSORS

- Can increase revenue by 25-50%
- High ROI - pays for itself in as little as one year



For more information on the IPS Fully Integrated Smart Parking Ecosystem, please contact us.

Schedule a Q&A: **877.630.6638** | ipsgroup.com

© 2023 IPS Group, Inc. All rights reserved.





Multi-Space Pay Station

The MS3 is the latest generation of IPS Pay Stations. Featuring a vibrant full-color display, touchscreen, merchant coupons, multi-language support and intuitive interface, the MS3 provides the most customer conveniences of any pay station on the market. Configurations and real-time data are accessed via the fully integrated, web-based Data Management System.

- ① Solar Panel
- ② Color Display
- ③ Touchscreen
- ④ Multi-Language Support
- ⑤ Contactless NFC Reader



MULTI-SPACE

PAY STATIONS

KEY BENEFITS

- Pay-by-Plate, Pay-and-Display, Pay-by-Space
- Secure and Durable
- Customer-Friendly
- Unparalleled Power Efficiency
- Enhanced Visibility Promotes Safety
- Fast, Easy Maintenance
- Future-Proof
- Card, Coin, Contactless Payments
- “Coupon Smarter” Merchant Coupons
- Reliable in Extreme Weather; Vandal-Resistant
- Contactless Payment via Latest Platforms



OTHER AFFORDABLE OPTIONS:



The predecessor of the MS3, the MS1 offers many similar features as an economical alternative. Contact IPS Sales for more information.



For more information on the IPS Fully Integrated Smart Parking Ecosystem, please contact us.

Schedule a Q&A: **877.630.6638** | [ipsgroup.com](https://www.ipsgroup.com)

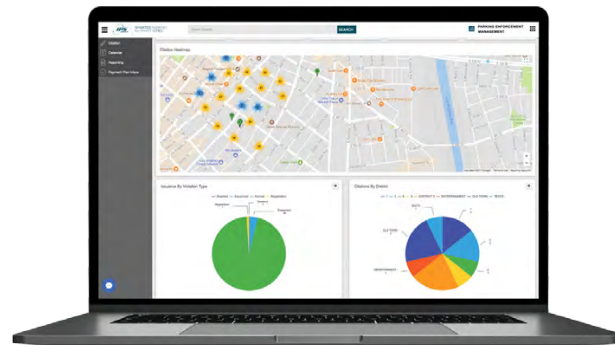
© 2023 IPS Group, Inc. All rights reserved.



Enforcement Management Solution

The IPS Enforcement Management Solution handles all stages of citation administration from ticket issuance to collections using real-time technology and dedicated customer service resources.

Born in the cloud without the growth limitations of older legacy enforcement technologies, the IPS Solution is highly flexible with powerful features to meet all your needs today, and scalable to evolve with your operations.



ENFORCEMENT

MANAGEMENT

END-TO-END SOLUTIONS

Enforcement Management System (EMS): The central hub for end-to-end enforcement management.

Public Citation Management Portal: A secure website for the public to review citations, pay, contest and get support.

Mobile Enforcement System (MES): Supports current iOS, Android and Windows mobile devices; new 1 and 2-piece options. Seamless connection to EMS for rapid processing.

Additional Compliance Solutions: Fully Integrated Permitting, Code Enforcement & Event Management.



For more information on the IPS Fully Integrated Smart Parking Ecosystem, please contact us.

Schedule a Q&A: **877.630.6638** | ipsgroup.com

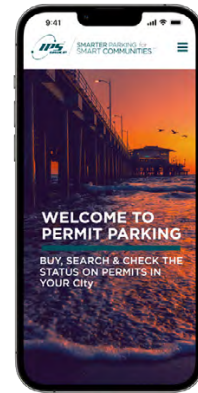
© 2023 IPS Group, Inc. All rights reserved.



Permit Management Solution

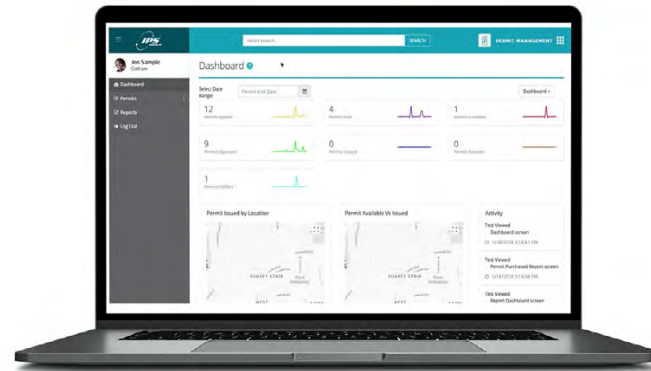
The IPS Permit Management Solution supports the entire administrative lifecycle for any permit program from design through fulfillment.

Access to real-time permit details, applications, waitlists, reporting and insights are available on the web 24/7. A secure public portal provides customers with a convenient ecommerce experience to apply for (or renew) their permits, print temporary permits, and obtain additional information or support.



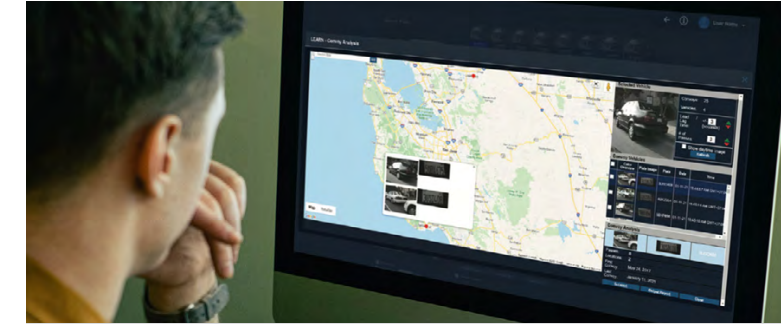
PERMIT

MANAGEMENT

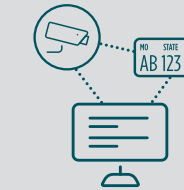


KEY BENEFITS

- Customizable to Any Program
- Cloud-Based, Real-Time Solution
- Supports Digital and Physical Permits
- DMV Integration
- Robust Reporting Library
- Waitlist Management
- Intuitive Dashboard
- Virtual Permitting with Integrated LPR
- Secure, Convenient Customer Portal



DIGITAL LICENSE-PLATE BASED PERMITTING



- Greater Program Compliance & Efficiency.
- Cost-Efficient. No Inventory to Manage.
- Happier Customers: No Waiting.



For more information on the IPS Fully Integrated Smart Parking Ecosystem, please contact us.

Schedule a Q&A: **877.630.6638** | [ipsgroup.com](https://www.ipsgroup.com)

© 2023 IPS Group, Inc. All rights reserved.

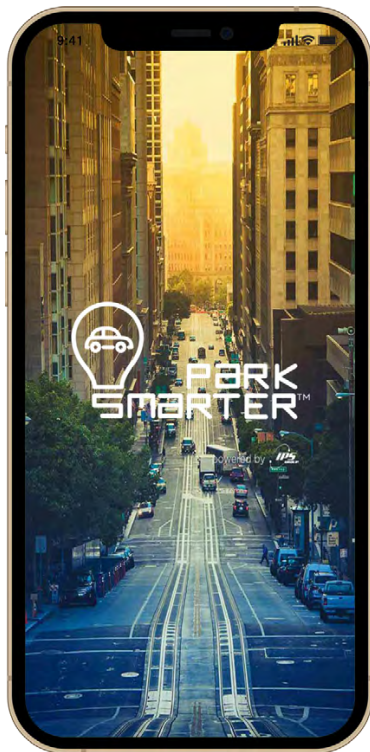




Mobile Payment

PARK SMARTER provides your customers with greater convenience in a contactless mobile parking experience paying by app, text, or on the web. The Bluetooth-enabled app is part of the IPS Fully Integrated Smart Parking Ecosystem and is available to IPS Meter customers at no additional cost.

Parking policies, rate structures, live alerts, reporting, data analytics, and app management are available through the IPS Data Management System, fully connected and perfectly aligned with your entire parking operation.

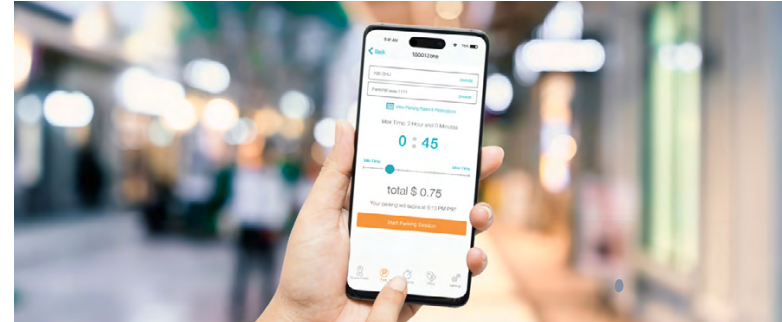


PARKING APP

MOBILE PAYMENT

KEY BENEFITS

- Pay with the App, by Text or Web
- Quick, Easy Account Setup
- Remote Extensions
- Real-Time Parking Finder (Enabled with IPS Smart Sensors)
- Merchant Validations
- Optimized with BLE Connectivity (Requires Meter BLE Upgrade)
- Real-Time Parking Alerts
- Personal Account Management
- Supports Facebook Authentication
- No Convenience Fees



FIND
AVAILABLE
PARKING



EXTEND
PARKING
SESSION



MULTIPLE
CARDS PER
ACCOUNT



For more information on the IPS Fully Integrated Smart Parking Ecosystem, please contact us.

Schedule a Q&A: **877.630.6638** | [ipsgroup.com](https://www.ipsgroup.com)

© 2023 IPS Group, Inc. All rights reserved.





Digital Receipts

My Parking Receipt is a free digital receipt service that allows customers to view, download and print their parking receipts of payments made at any IPS Meter. Customers can access as a guest user, or create an account for a full expense history and to sign up to receive email receipts automatically.

This convenient IPS service gives greater control and flexibility for customers to manage their parking expenses for personal or business needs.



WEBSITE

DIGITAL RECEIPTS

KEY BENEFITS

- 100% Free, Value-Added Service
- Detailed Transaction History
- Simple, User-Friendly Experience
- Multiple Cards and Vehicles per Account
- Paperless Receipts
- Automatic Receipts for Account-Holders
- Guest or Account Access
- Download and Print Options



PAY-BY-PLATE CONVENIENCE

1. Customer registers their card and license plate number at MyParkingReceipt.com.
2. Customer swipes registered card at IPS Pay-by-Plate Pay Station.
3. License plate information autopopulates – no trips back to the vehicle!



For more information on the IPS Fully Integrated Smart Parking Ecosystem, please contact us.

Schedule a Q&A: **877.630.6638** | [ipsgroup.com](https://www.ipsgroup.com)

© 2023 IPS Group, Inc. All rights reserved.





For more information on the IPS Fully Integrated Smart Parking Ecosystem, please contact us.

Schedule a Q&A: **877.630.6638** | [ipsgroup.com](https://www.ipsgroup.com)

© 2023 IPS Group, Inc. All rights reserved.

